



SBP-115PA

Wall&Pole Adaptor



Key Features

- Color : White
 - Mount screw size : TR30
 - Dimensions : $\varnothing 125 \times 27.7 \text{mm}$
- ※ Totally 3pcs included on package

SBP-115PA

Wall&Pole Adaptor



Specifications

Mechanical	
Color	White
Material	Polycarbonate(PC), Aluminum
RAL code	RAL9003
Product dimensions / weight	ø125x27.7mm(ø4.92x1.09") / 242g (0.54lb)
Mount Screw size	TR30
Max. load	None ※ Follow maximum load same as assembled mount
Supported products	- Mount : SBP-250MMW - Camera : XNP-C7310R/C9310R, XNP-C6403/C8253/C9253, XNP-6400/8250/9250 ※ For further compatible models, please visit our website or use Toolbox

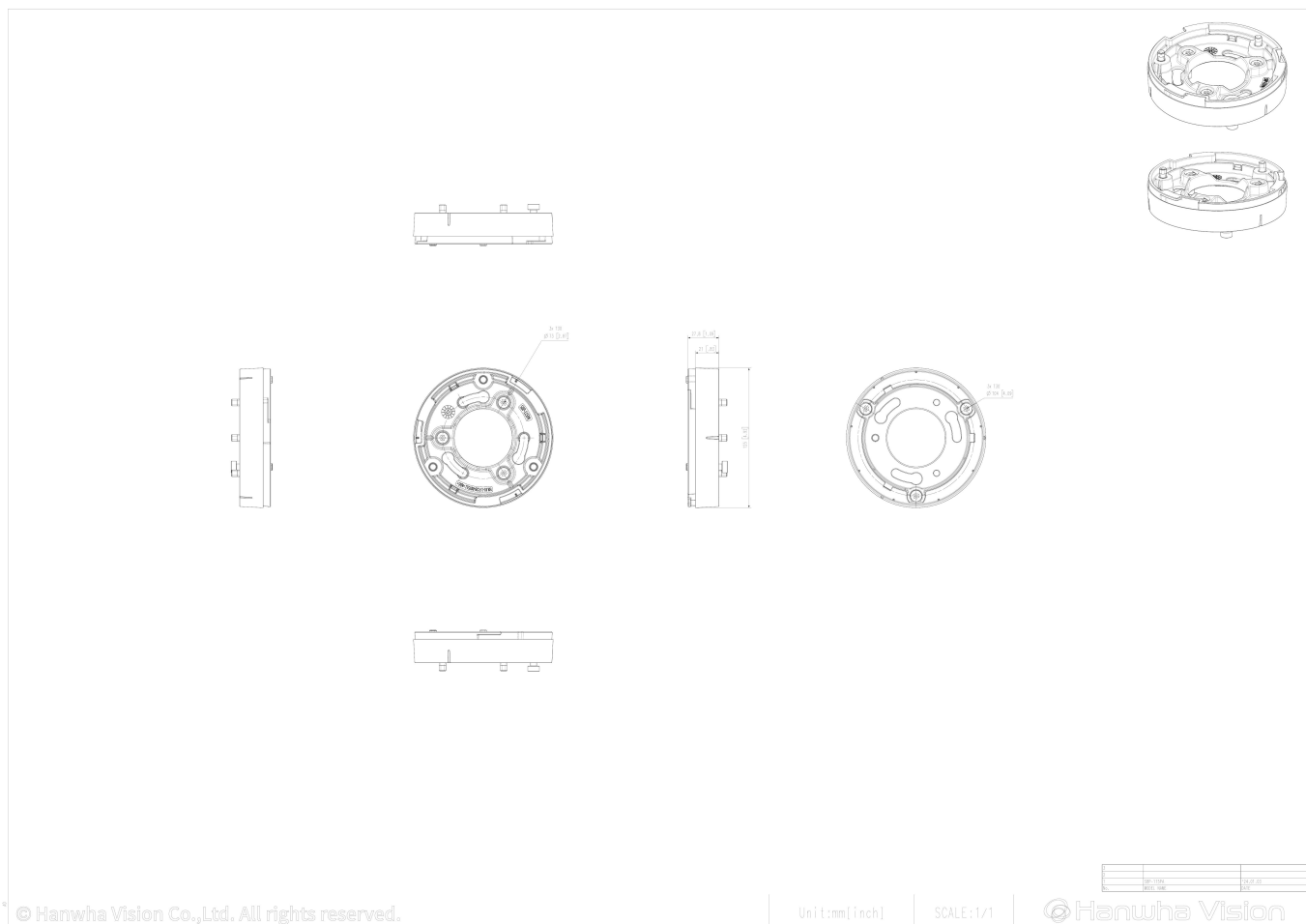
SBP-115PA

Wall&Pole Adaptor



CAD

Unit:mm [inch]



© Hanwha Vision Co.,Ltd. All rights reserved.

Unit:mm[inch]

SCALE:1/1

Hanwha Vision