

## iDS-MCD402-E 4G Dual-lens ANPR Portable Speed Dome



- Support for dual cameras, Lens 1: 1/1.8" progressive scan CMOS; Lens 2: 1/1.8" CMOS
- 36× optical zoom, 12× digital zoom
- 3D DNR/Defog/EIS
- Up to 100 m IR distance
- Quick installation with the magnetic base and the tripod bracket
- Replaceable battery for sustainable work
- 360° endless pan and -20° to 90° (auto-flip) tilt movement range for PTZ
- Embedded screen for status display, e.g. battery, GPS, 3G/4G, record status, storage capacity, Bluetooth, platform access, Wi-Fi, and smart algorithm mode
- Supports accessing via IE browser and client, and remote operation

## ▪ Specification

Camera	
Image Sensor	Lens 1: 1/1.8" progressive scan CMOS Lens 2: 1/1.8" progressive scan CMOS
Zoom	36× Optical, 12× Digital
Max. Resolution	3840 × 2160
Min. Illumination	Lens 1: Color: 0.005 Lux @ (F1.3, AGC ON); Black: 0.0005 Lux @ (F1.3, AGC ON) Lens 2: Color: 0.02 Lux @ (F1.7, AGC ON); Black: 0.02 Lux @ (F1.7, AGC ON)
Day & Night	Switch IR Cut Filter Automatically
Optical Image Stabilization	Supported
Lens	
Focal Length	Lens 1: 6 to 216 mm Lens 2: 2.8 mm fixed lens
Aperture	Lens 1: F1.3 to F4.6 Lens 2: F1.7
FOV	Lens 1: Horizontal FOV: 59° to 2.0°, vertical FOV: 34.2° to 1.1°, diagonal FOV: 67.1° to 2.3° Lens 2: Horizontal FOV: 102°, vertical FOV: 56°, diagonal FOV: 123°
Zoom Speed	Approx. 4.6 s (optical lens, wide-tele)
Event	
Smart Event	Vehicle recognition, face recognition, helmet detection, phone call, workwear detection, smoking detection, area invasion, intrusion detection (supports 4 areas)
License Plate Recognition	Supported
Video	
Video Compression	H.264, H.265
Video Format	PS
Main Stream	Lens 1: 60 Hz: 30 fps (2688 × 1520, 1920 × 1080, 1280 × 720, 720 × 576) Lens 2: 60 Hz: 30 fps (3840 × 2160, 3072 × 1728, 704 × 240, 352 × 240)
Sub Stream	Lens 1: 60 Hz: 12 fps (1920 × 1080); 30 fps (1280 × 720, 704 × 480, 704 × 240, 352 × 240) Lens 2: 60 Hz: 30 fps (1280 × 720, 704 × 240, 352 × 240)
Audio	
Audio Compression	G.711 u-law, G.711 a-law, G.722.1
Audio Bit Rate	64 Kbps (G.711 u-law/G.711 a-law), 16 Kbps (G.722.1)
Image	
Wide Dynamic Range (WDR)	120 dB
Image Enhancement	3D DNR, Defog, EIS
Image Format	JPEG
Screen	
Screen Type	LCD
Touchscreen	Supported
Screen Size	2.0"
Resolution	320 × 240
Storage	
RAM	2 GB
ROM	4 GB

<b>IR</b>	
IR Range	Up to 100 m
IR Wavelength	850 nm
<b>Wireless Network</b>	
Positioning Mode	GPS
Wi-Fi Frequency Band	2.412 to 2.472 GHz, 5.15 to 5.25 GHz, 5.725 to 5.875 GHz
Wi-Fi Protocol	802.11 a/b/g/n/ac
Cellular Network	Only available for models with /GLE: GSM: 850/900/1800 WCDMA: B1/B5/B8 FDD-LTE: B1/B3/B5/B7/B8/B20 TDD-LTE: B38/B40/B41
Bluetooth	BT 4.0
<b>Network</b>	
Protocol	HTTPS, RTSP, NTP, FTP
API	ONVIF (PROFILE S, PROFILE G, PROFILE T), ISAPI, SDK, ISUP
<b>Interface</b>	
Indicator	1 status indicator: charging/power on/power off
Button	Power on/off
SIM Card	Available for models with '/GLE': 1 slot (fit for Micro-SIM)
Ethernet	1 RJ-45 10M/100M/1000M self-adaptive Ethernet port(s)
Aviation Plug	10-Core Aviation Plug: supporting RS-232, RJ-45 and power input 9-Core Aviation Plug: supporting RS-485, LINE IN/LINE OUT, 5V output, Alarm I/O
Extended Storage	Built-in 2 memory card slots, supporting TF card, up to 256 GB for each
<b>PTZ</b>	
Preset	256 arming locations
Movement Range (Pan)	360° endless
Patrol Scan	8 patrols
Movement Range (Tilt)	-20° to 90° (Auto-flip)
<b>General</b>	
Operating Condition	-20 °C to 60 °C (-4 °F to 140 °F). Humidity 95% or less (non-condensing)
Operating System	Linux
Storage Condition	-30 °C to 70 °C (-22 °F to 158 °F). Humidity 95% or less (non-condensing)
Light Sensor	Supported
MIC	Supported
Speaker	2 Built-in speakers, max. power consumption: 2.5 W, max. sound pressure level: 102 dB (10 cm)
Web Browser	Plug-in required live view: IE 10+
Client	Hik-Connect, HikCentral Pro, HikCentral Master
Power	12 VDC, 5.0 A, max. 60 W
Dimension	Height: 262 mm (10.3"), diameter: 175 mm (6.9")
Weight	4.35 kg (9.59 lb.)
Installation Method	Wall-Mounted, tripod-mounted, movable bracket

Packing List	1 × AC power cord 1 × Lithium-ion battery 1 × Adapter 1 × Safety rope 1 × C92-screwdriver 1 × Composite cable
<b>Battery</b>	
Battery Type	Lithium-ion battery, dismountable
Capacity	13400 mAh
Charging Time	≤ 4 h
Battery Life	9 h with 4MP recording <sup>1</sup>
<b>Approval</b>	
RF	CE-RED : EN 301 489-1 V2.2.3:2019; EN 301 489-3 V2.2.2:2019; EN 301 489-17 V3.2.4:2020; EN 301 489-19 V2.2.1:2022; EN 301 489-52 V1.2.1:2021; EN 55032:2015/A11:2020; EN 55035:2017/A11:2020; EN 50130-4:2011/A1:2014; EN IEC 61000-3-2:2019/A1:2021; EN 61000-3-3:2013/A2:2021; EN 300 328 V2.2.2:2019; EN 301 893 V2.1.1.1:2017; EN 301 440 V2.1.1:2017; EN 301 908-1 V15.1.1:2021; EN 301 908-2 V13.1.1:2020; EN 301 908-13 V13.2.1:2022; EN 303 413 V1.2.1:2021; EN 62479:2010; EN 50663:2017; EN 50385:2017; EN IEC 62311:2020; EN 62311:2008; EN 62368-1:2014/A11:2017
EMC	CE-EMC: EN 55032:2015/A11:2020; EN 55035:2017/A11:2020; EN 50130-4:2011/A1:2014; EN IEC 61000-3-2:2019/A1:2021; EN 61000-3-3:2013/A2:2021
Safety	CB: IEC 62368-1:2018 CE-LVD: EN 62368-1:2014/A11:2017
Environment	CE-RoHS: 2011/65/EU
Protection	IP66

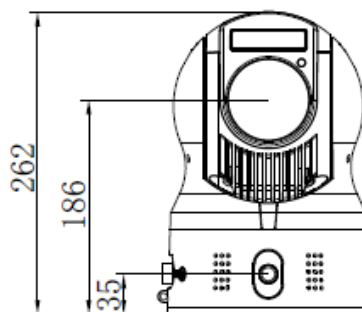
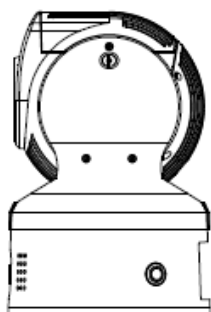
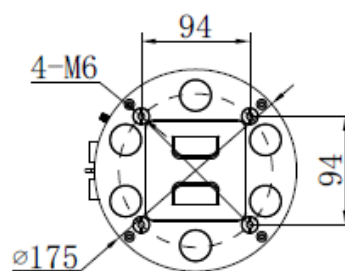
1: This is a basic estimation of battery life only when recording is on. Additional power consumption should be considered when IR, GPS, and/or network connection is on.

## ▪ Available Model

iDS-MCD402-E/36X/I/GLE

Dimension

unit: mm




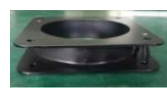


▪ **Accessory**

▪ **Included**



▪ **Optional**

<b>DS-MH1491</b> <b>Portable PTZ Dome</b> <b>Battery Charger</b>	<b>DS-MH1695I-H</b> <b>Portable PTZ Dome</b> <b>Tripod</b>	<b>DS-MH1697-H</b> <b>Portable PTZ Dome</b> <b>Tripod</b>	<b>DS-MH1790</b> <b>Antiknock-ST-CZ51</b>
			

**Headquarters**

No.555 Qianmo Road, Binjiang District,  
 Hangzhou 310051, China  
 T +86-571-8807-5998  
 www.hikvision.com



Follow us on social media to get the latest product and solution information.

