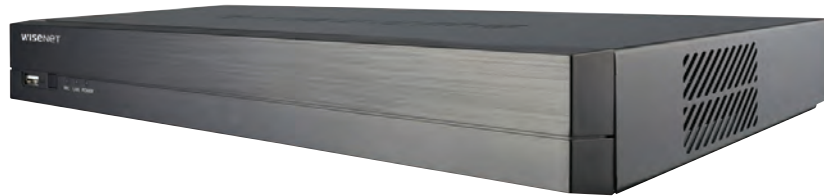


# HRX-420

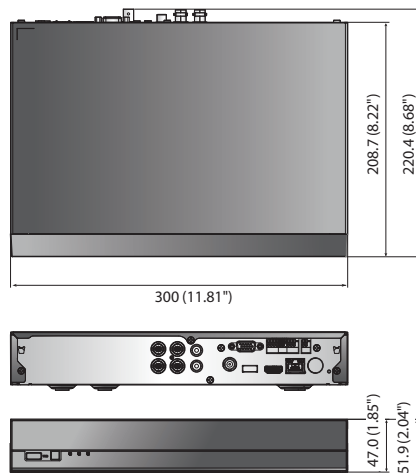
4CH Pentabrid DVR



## Key Features

- 5-in-1 4CH Embedded DVR
- AHD/HDTVI/HDCVI/CVBS/IP inputs
- Max. Analog 4CH + NW 2CH, up to 8MP per NW camera
- H.265, H.264, MJPEG and WiseStream
- 8fps@8MP, 12fps@5MP recording
- Coaxial control
- Smart search(only Network camera)
- Up to 1 SATA HDD(6TB)
- HDMI/VGA local monitor
- P2P service(QR code connect)

## Dimensions



Unit : mm (inch)

## HRX-420

VIDEO		
Analog Camera	Input	4CH, 1Vp-p 75ohm, BNC
	Signal Type	AHD(8MP, 5MP, 4MP, 1080p, 720p) HDTVI(8MP, 5MP, 4MP, 1080p, 720p) HDCVI(5MP, 4MP, 1080p, 720p) CVBS(NTSC/PAL)
Network Camera	Inputs	Max. 6CH
	Resolution	8MP ~ CIF
	Protocols	SUNAPI(Wisenet), ONVIF
Live	Local Display	HDMI : 3840 x 2160, 1920 x 1080, 1280 x 720 VGA : 1920 x 1080, 1280 x 720
	Multi Screen Display	[Local monitor] 1 / 2H / 2V / 3V / 4 / 6(1+5) / 6(3x2) / Auto sequence [Web] 1 / 4
	Resolution	[Analog Camera(NTSC/PAL)] - 8MP(15/12fps), 5MP(20/12fps), 4MP(30/25fps), 2MP(30/25fps), 1MP(30/25fps), 960H(or 720H)(30/25fps) * per CH [Network Camera] - Typ. 2MP(120fps)
PERFORMANCE		
Operating System	Embedded	Linux
Record	Compression	H.265, H.264, MJPEG
	Record Rate(Analog)	Analog Camera(NTSC/PAL) - (Main Stream) 8MP 8/8fps CH, 5M 12/12fps CH, 4M 15/12fps CH, 2M 30/25fps CH, 720p 30/25fps/CH, SD 30/25fps/CH - (Sub Stream) 720p or higher : 640x360 full fps/CH, SD signal : upto SD full fps/CH * The maximum recording frame rate depends on the frame rate of the input camera.
	Recording Bandwidth	Max. 25Mbps (Analog Camera only) ~ 17Mbps (Network Camera only)
	Resolution	8MP ~ CIF
	Mode	Manual, Schedule (Continuous/Event), Event(Pre/Post), Dual Track
	Event Trigger	Alarm Input Analog Camera : Video Loss, Motion Detection, Tampering Network Camera : Camera Event (Sensor, MD, Video analytics), VA event (Tampering, Enter / Exit, Passing), Virtual- line, (Dis)Appear, Face Detection, Audio detection, Defocus camera event
	Event Action	E-mail, PTZ preset, Alarm out, Buzzer, Monitor out
Search & Play	Playback Bandwidth	Max. 32Mbps (6CH simultaneously)
	User	Max. 4 Users (Local 1, Remote 3)
	Simultaneous Playback	6CH(Local Monitor) 4CH(CMS, Wisenet Mobile), 1CH(Web)
	Fisheye Dewarping	WEB / CMS
	Mode	Date & Time (Calendar) / Event log list / Text search (POS), Back up, Motion, Smart search (Virtual Line w/ direction, Enter / Exit) * All Search Included Preview Function ARB search
	Resolution	8MP ~ CIF
	Playback Control	Fast Forward/Backward (x2,x4,x8,x16,x32,x64, x128, x256) Slow Forward/Backward (x1/2,x1/4,x1/8) * Move one step up/down
Storage	Supported HDD	Up to 6TB
	HDD Slot	SATA 1ea(Max 6TB)
Backup	File Backup	BU, EXE(Include Player), AVI(Webviewer only)
	Function	Max. 6 CH play, Date-time/title display

**HRX-420**

<b>NETWORK</b>		
Protocol	TCP/IP, UDP/IP, RTP (UDP), RTP (TCP), RTSP, NTP, HTTP, DHCP (Server, Client), PPPoE, SMTP, ICMP, IGMP, ARP, DNS, DDNS, uPnP, HTTPS, SNMP, ONVIF (Profile-S), SUNAPI(Server, Client)	
DDNS	Wisenet DDNS	
Transmission speed	Analog Camera(NTSC/PAL) - (Main Stream) 8MP 8/8fps CH, 5M 12/12fps CH, 4M 15/12fps CH, 2M 30/25fps CH, 720p 30/25fps/CH, SD 30/25fps/CH, 720p 30/25fps/CH, SD 30/25fps/CH - (Sub Stream) 720p or higher : 640x360 full fps/CH, SD signal : upto SD full fps/CH * The maximum recording frame rate depends on the frame rate of the input camera.	
Transmission	Max. 15Mbps	
Audio	Input/Output	1 Line in / 1 Line out
	Compression	G.711 (N/W Cam G.711, 726)
	Audio Communication	2-Way
Max Remote Users	Search(3), Live Unicast(10), Multicast(20)	
Security	IP address filtering, User access log, 802.1x Authentication, Encryption (ID/PW, Recording, Transmission, Backup)	
Viewer Software	SSM, Webviewer, Smart Viewer, Wisenet mobile Support SDK/CGI(SUNAPI) for integration to 3'rd party VMS	
<b>FUNCTION</b>		
Camera Setup	Register	Auto, Manual
PTZ	Control	Via GUI, Webviewer, SSM, SmartViewer, Wisenet Mobile Viewer, System Controller
	Preset	300 presets
Smart phone	Support Model	iOS, Android
	Protocol Support	RTP, RTSP, HTTP, CGI(SUNAPI)
	Control	Live(4ch) : Multi-Profile Support Playback(4Ch Multi Playback, Max 2MP) Event push
	Max. Remote Users	Search(3), Live Unicast(10)
Redundancy	ARB	Support
Easy configuration	Setup Wizard (Language Date/Time, Password, Network, Auto Camera Configuration), P2P (QR code)	
Coaxial Control	CVBS(Pelco-C)/AHD/CVI/TVI	
<b>INTERFACE</b>		
Front	Indicator	LED(Status indicator) : Power(1), Record(1), Network(1)
Reset	Switch(1EA)	
HDMI	1EA	
VGA	1EA	
BNC	4CH In / 1CH Out(Spot Output)	
Audio	Out(1EA, RCA, Line)	
Ethernet	RJ-45(10/100/1000BASE-T)	
Alarm	In 4EA, Out 1EA - Relay Out1(NO/NC/COM)	
USB	2EA(Front/Rear USB2.0)	
Serial(Protocols)	RS-485 (Samsung-T/Pelco-D/Pelco-p) * for PTZ	
Power inlet	1EA DC Input Jack	

<b>SYSTEM</b>		
<b>Log</b>	<b>Log List</b>	Max. 20,000 (System Log, Event Log each)
<b>System Control</b>		Mouse, IR Remocon, Webviewer, System Controller(SPC-7000, SPC-6000, SPC-2000)
<b>Language</b>		English, French, German, Italian, Spanish, Russian, Turkish, Polish, Dutch, Swedish, Czech, Portuguese, Danish, Rumanian, Serbian, Croatian, Hungarian, Greek, Norwegian, Finnish, Korean, Chinese, Japanese, Thai
<b>ENVIRONMENTAL</b>		
<b>Operating Temperature</b>		0°C to +40°C(+32°F to +104°F)
<b>Operating Humidity</b>		20% ~ 85% RH
<b>Certification</b>		UL, CE, FCC, KC
<b>ELECTRICAL</b>		
<b>Power Input</b>		DC12V
<b>Power Consumption</b>		Max. 14W (6T HDD 1ea)
<b>MECHANICAL</b>		
<b>Color / Material</b>		Black / Metal
<b>Dimension (WxHxD)</b>		300 x 47 x 208.7mm (11.85" x 1.89" x 8.22")
<b>Weight</b>		Approx. 1.5Kg (3.3 lb, 4TB HDD 1ea)

\* The latest product information / specification can be found at [hanwha-security.com](http://hanwha-security.com)

\* Design and specifications are subject to change without notice.

\* Wisenet is the proprietary brand of **Hanwha Techwin**.