



HIKVISION EUROPE B.V.

How to Connect Secure Module with the 2nd Generation Modular Door Station

Product:	DS-KD8003-IME1/2
Publisher:	Emily.Deng
Version:	V.R 2019 Nov.



Hikvision Europe B.V.

www.hikvision.com/europe

product.eu@hikvision.com

Preparation

1. DS-KD8003-IME1 or DS-KD8003-IME2
On IVMS-4200 3.1.0.5, upgrade the door station DS-KD8003-IME1 to V2.0.8 build 20191023.
2. Secure Module DS-K2M060.
3. The Modular Door Station supports **exit button** and **lock** connected to secure module but doesn't support connect card reader.

Steps

Connect the Secure Module with Door Station Main Module or the Last Sub Module

1. Set DIP Switch of secure module. Turn on the first number as shown in the following picture.



2. Power the secure module by extra power supply unit of 12V 0.1A

Whether to use extra power supply for secure module depends on the total power consumption of main module and sub-module.

Power Description for 2nd Door Station

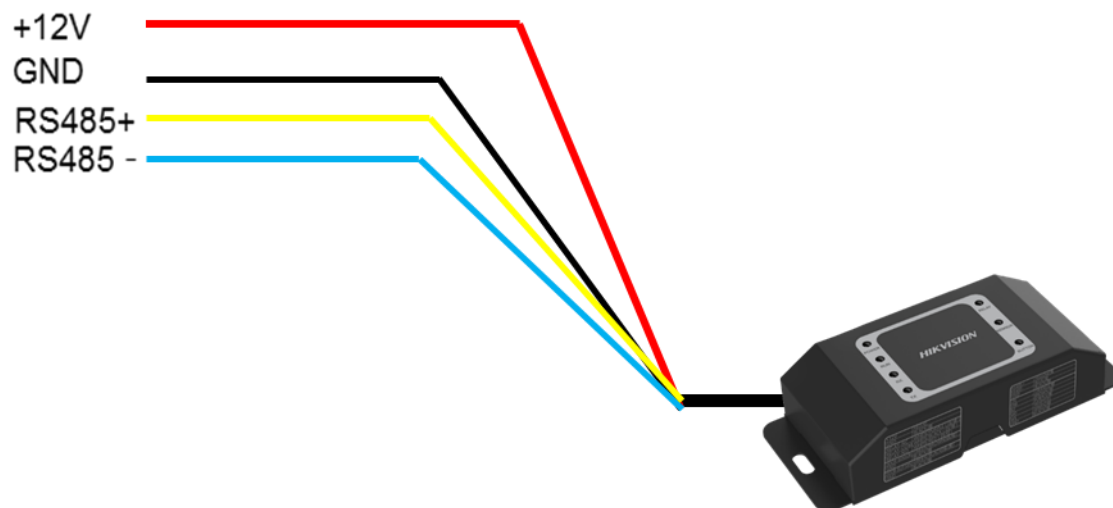
1. The main module & the sub-module maximum power consumption:

Modules	Power Consumption
DS-KD8003-IMEx	4W
DS-KD-KK	0.8W
DS-KD-KP	1W
DS-KD-DIS	2.5W
DS-KD-E	0.8W
DS-KD-M	0.8W
DS-KD-INFO	1.5W

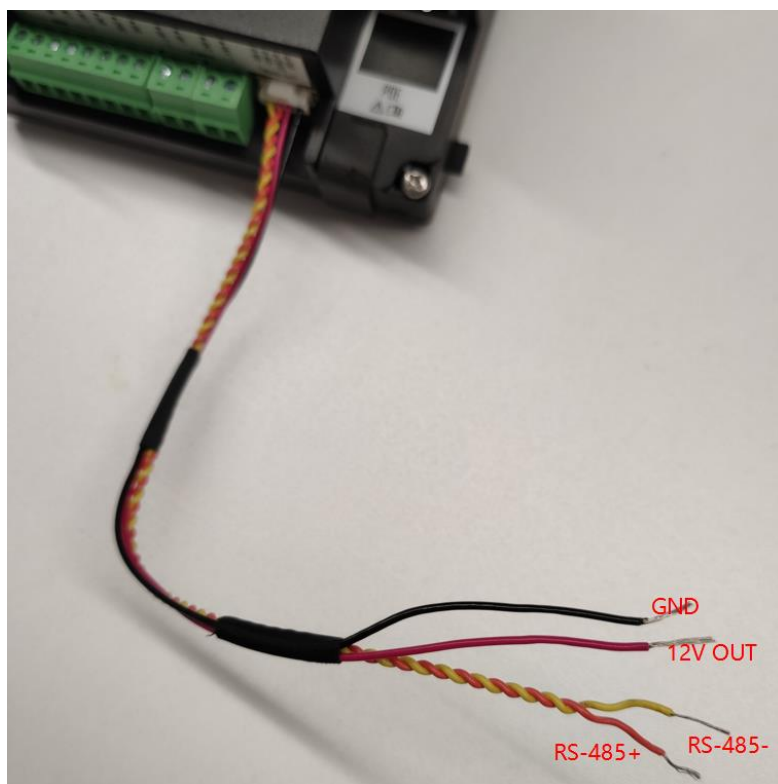


- 2. The maximum output power of POE switch in 802.af standard protocol is about 10.8W after deducting cable loss.
- 3. The output power of 12V DC power supply needs to be 120% higher than the power consumption of all modules;
- 4. Effective output power from each port of two-wire distributors KIS706, KIS704:

Modules		Power Consumption
KIS706	CH1-CH5	6W
	CH6	16W



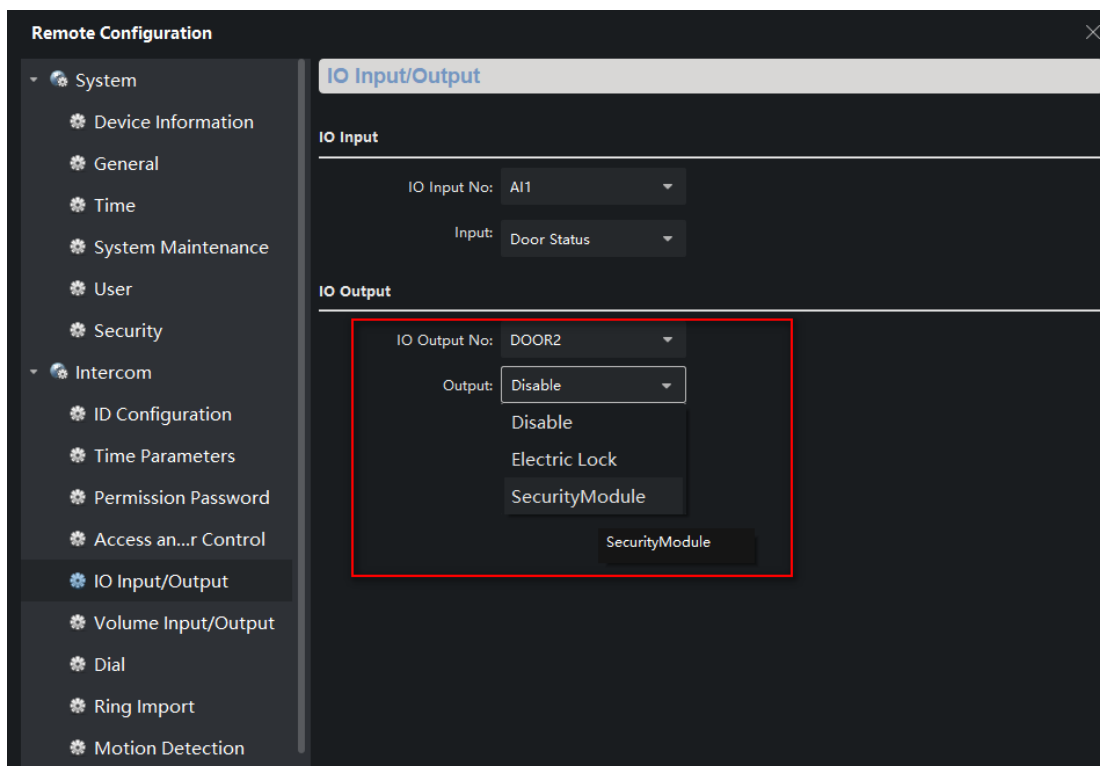
Connect secure module to door station.



Configure Secure Module

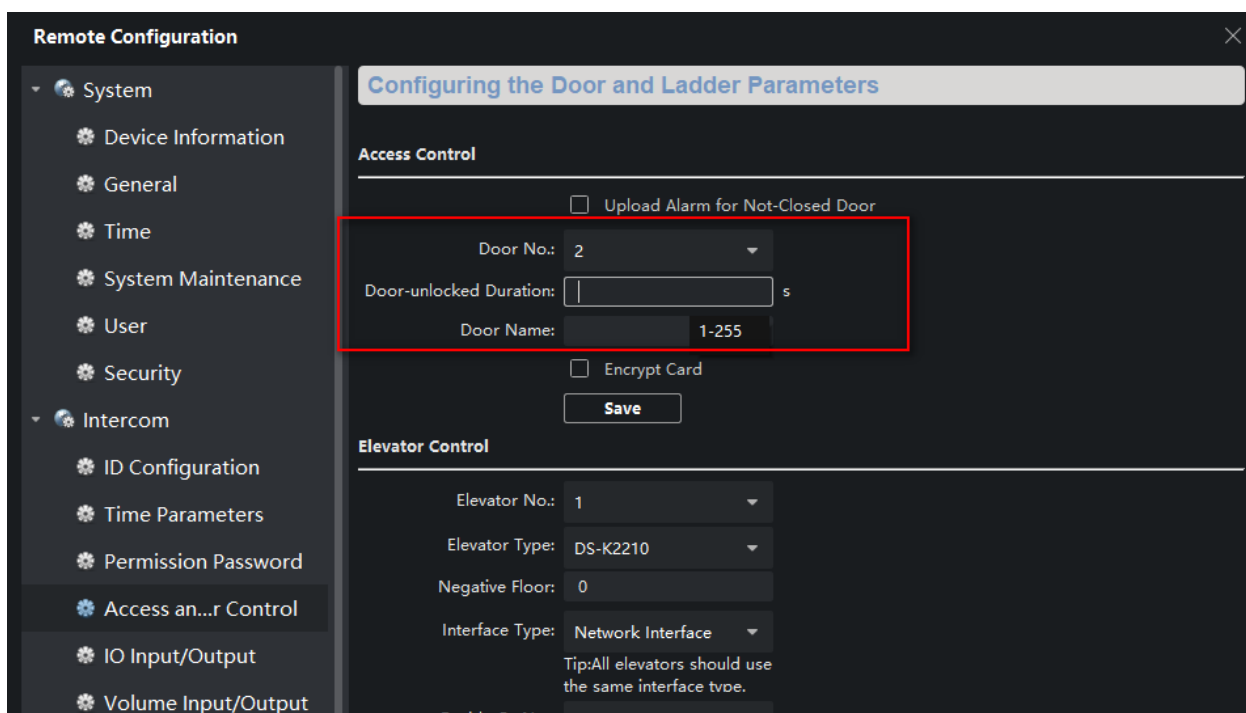
1. Enable Secure Module on IVMS-4200.

Go to remote configuration of door station, go to Intercom->IO Input/Output-> IO Output->DOOR3, Select Security Lock.



2. Set Door Open Time

Go to Access and Elevator Control->Access Control, Select door 2 and set door open time. The range of open door time interval is from 1s to 255s.



3. Check Relay Status.

When the door 2 is successfully open, green light of RELAY will turn on.



Note:

Hope this guide helps, if you have any questions please contact me.

