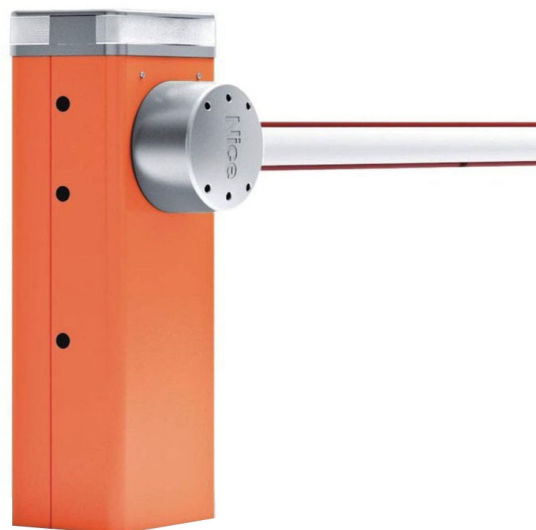


5 metre barrier actuator

- Electromechanical actuator for 5-metre barriers
Nice M5bar motor
- 24V DC geared motor
- Integrated control unit and loop detector
- Steel housing, foundation plate and protection treatment by cataphoresis and varnishing.

**Reference / Model****NICE-029 / M5BAR**

Electromechanical 5-metre barrier actuator Nice Motor

Minimum opening time of 3 seconds

Up to 450 cycles / hour

Control unit integrated in the upper part of the barrier body

Modular composition of the masts by means of aluminium expansion joints

Possibility of controlling the movement of two opposing operators in intelligent mode thanks to master/slave function

Electronically adjustable speed from 3 to 6 seconds

Elliptical mast with high resistance to wind gusts

Mast can be mounted on the right or left side

Heavy-duty balancing springs, up to 1 000 000 movements

Side release with metal key

Optional flashing light or traffic light, can be integrated in the cover

5 metre barrier actuator

Reference / Model**NICE-029 / M5BAR**

Movement control by encoder and electromechanical limit switches

Obstacle detection and monitoring of motor absorption during movement of the operator

Automatic diagnostics of malfunctions during operation

Predisposed for connection of the latest generation of optical and resistive sensitive edges (with 8.2 kOhm resistor)

Operation in the event of a power failure thanks to optional batteries

Nominal voltage 230V AC, 50/60Hz

Maximum power rating 110W

Operating temperature range -20°C ~ +55°C

Degree of protection IP54

Dimensions: 400 x 299 x 1215 mm

Weight: 80 kg